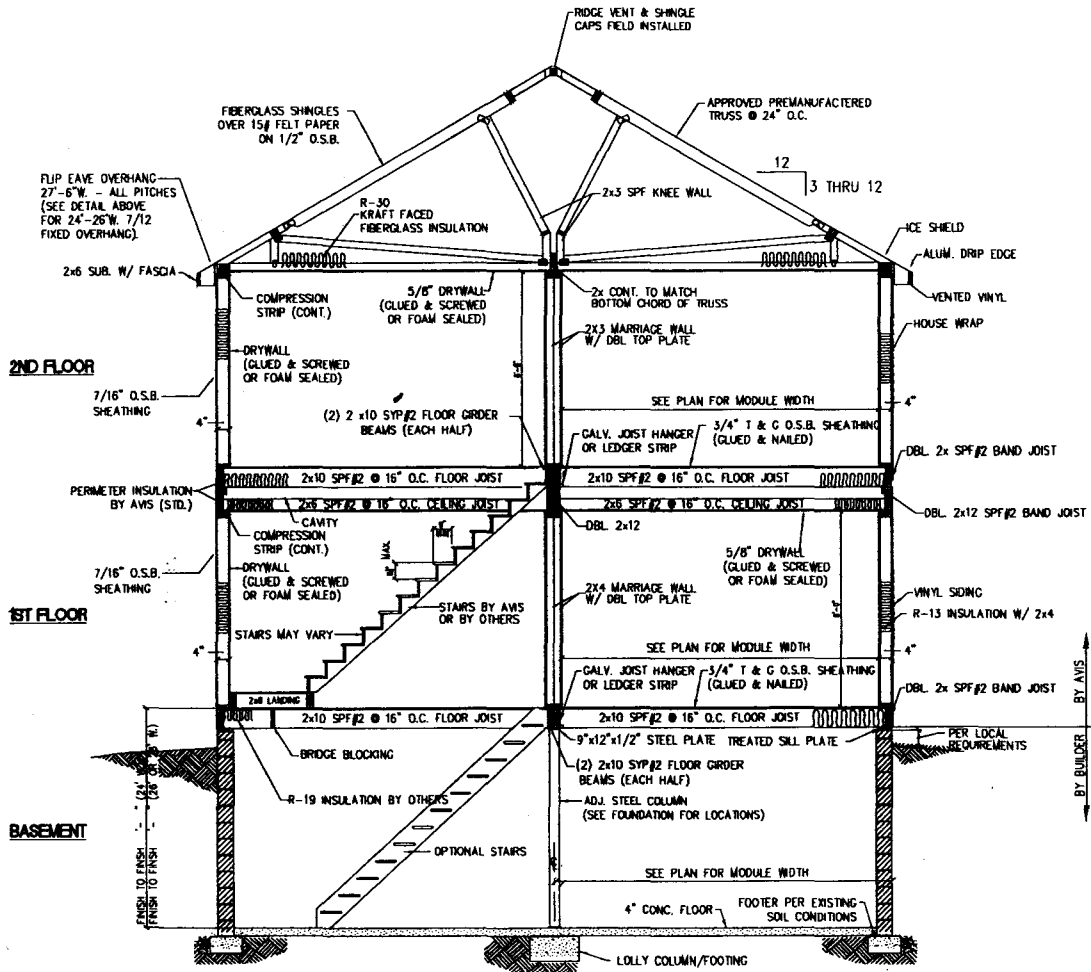


(A)

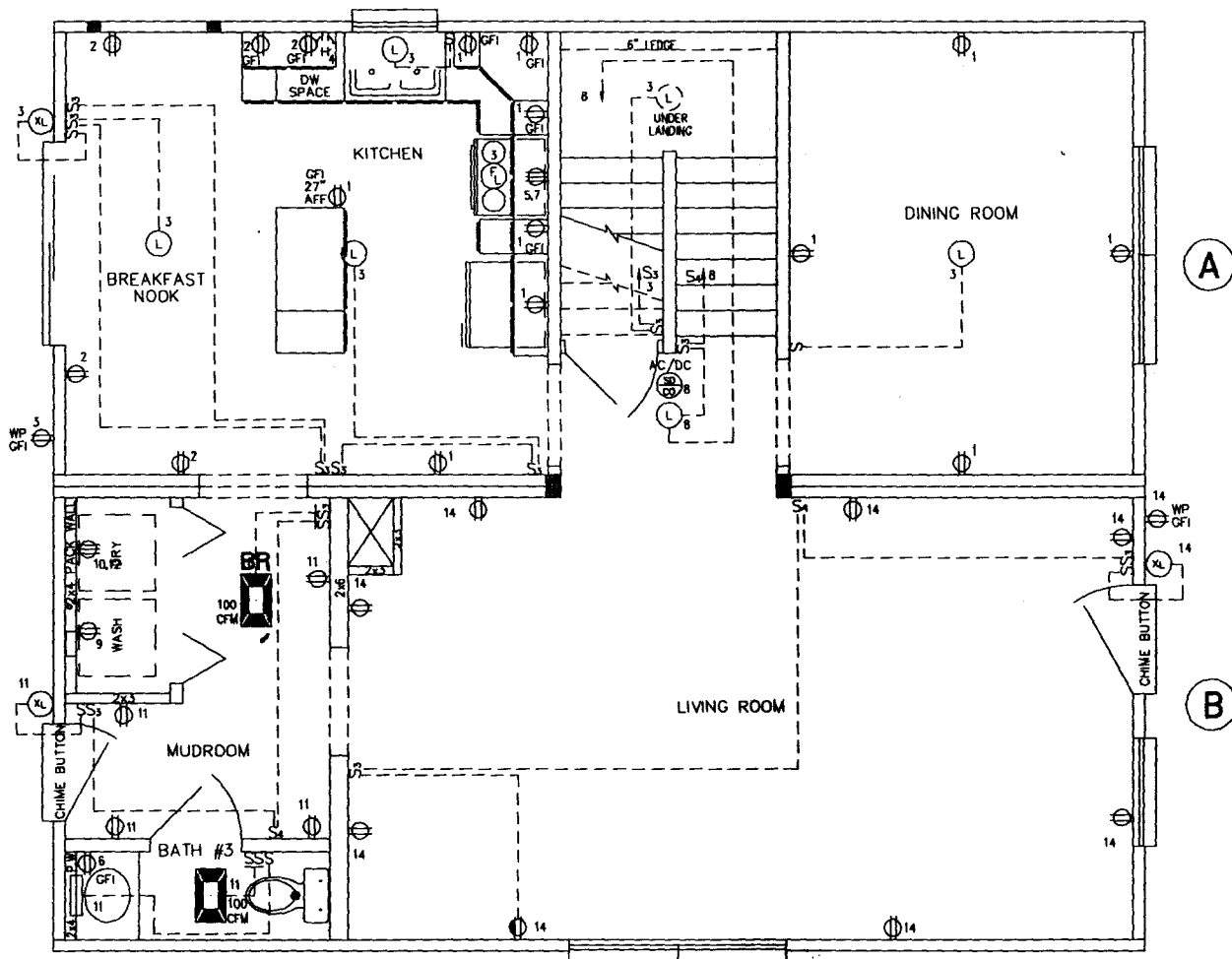
DETAIL APPLICABLE FOR FOLLOWING:

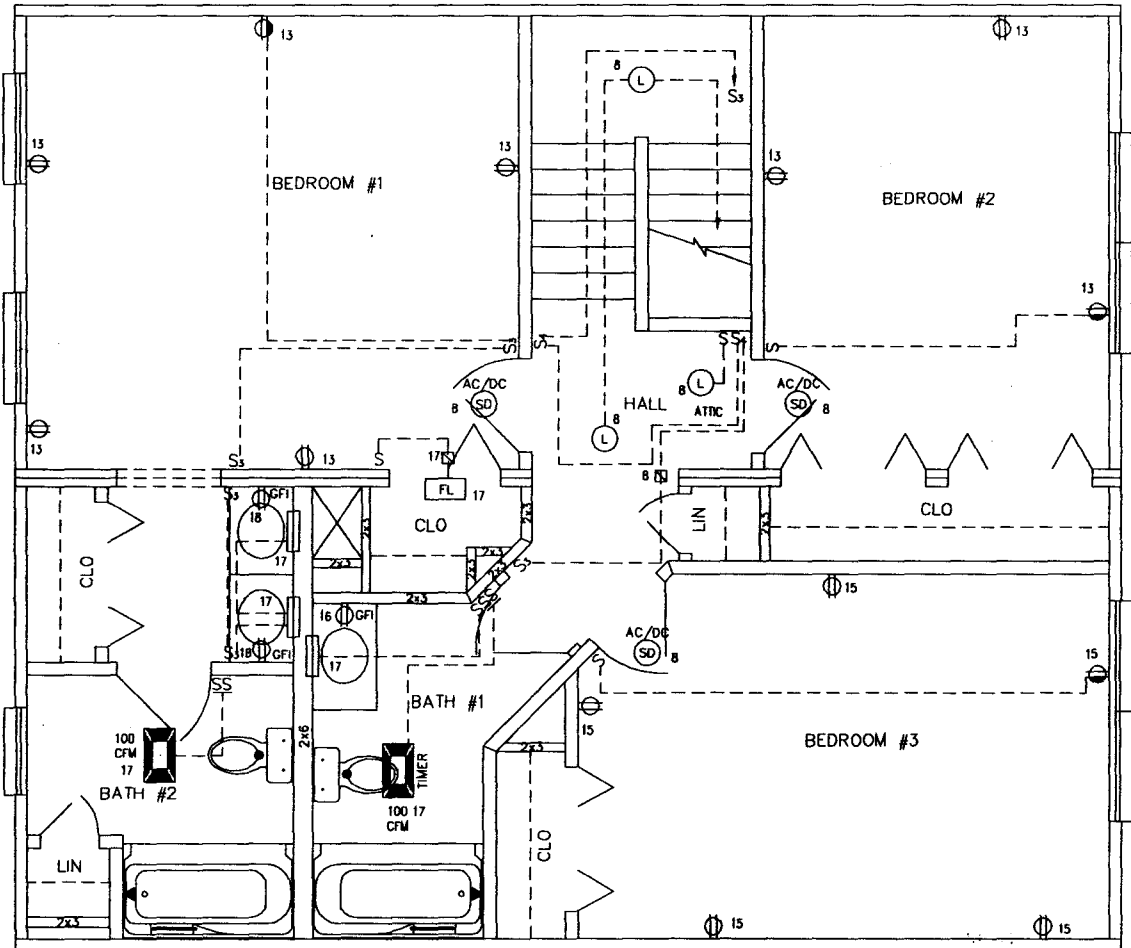
- 3/12 TO 12/12 PITCHES
- 10' TO 15'9" BOX WIDTH
- DRAWINGS B THROUGH
- TYPICAL SET DETAILS

ROOM ADDITIONS
TYPICAL CONNECTION
DETAILS



SCALE: 1/8" = 1'-0"
DATE: 10/2/88
DIN BY: GS





(C)

(D)